

INTRODUCTION

MODELS COVERED IN THIS MANUAL

MODELS COVERED IN THIS MANUAL

This manual covers service information on *Johnson* 3.5 HP 2-Stroke models. Use this manual together with the proper Parts Catalog for part numbers and for exploded views of the outboard, which are a valuable aid to disassembly and reassembly.

Model Number	Start	Shaft	Steer
J3RSDE	Rope	15"	Tiller

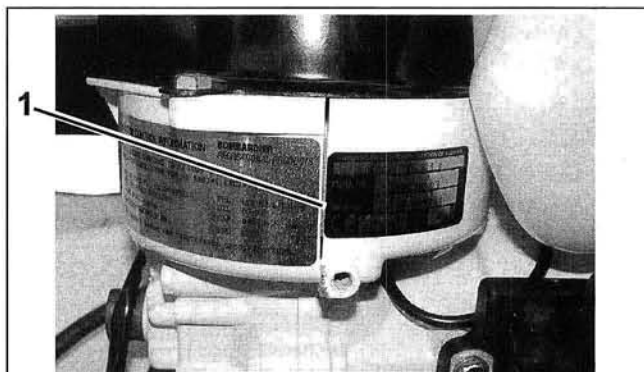
Identifying Model and Serial Numbers

Outboard model and serial numbers are located on the swivel bracket and on the powerhead.



3.5 Swivel Bracket
1. Model and serial number

001293



3.5 HP Powerhead
1. Serial number

001294