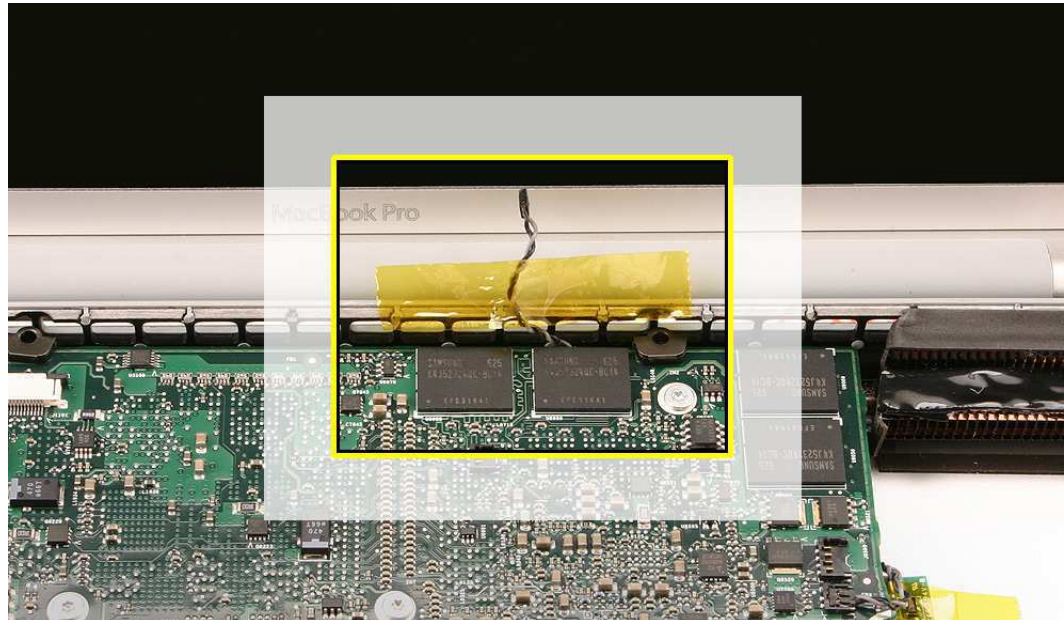
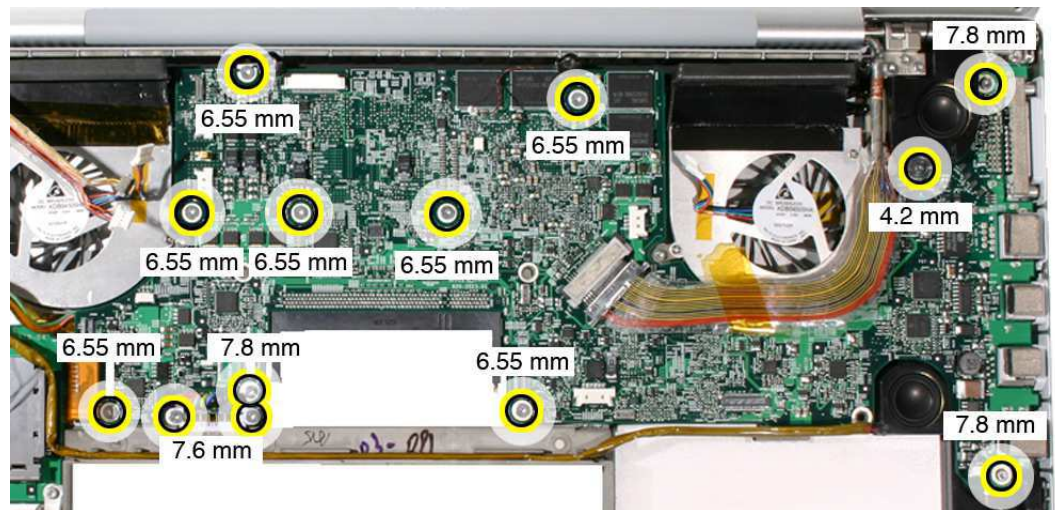


1. Tape the thermal sensor cable to the display assembly to avoid getting it trapped under the logic board and forgetting it during reassembly. **Important:** Do not tape over connectors with exposed contacts. Residual adhesive from the tape can contaminate the contacts.



2. Remove the thirteen Torx T6 screws, shown.



3. **Warning:** Do NOT allow the logic board to flex at any time. Flexing the board can crack solder joints to components. Give special attention at the narrow neck of the fan cutout.