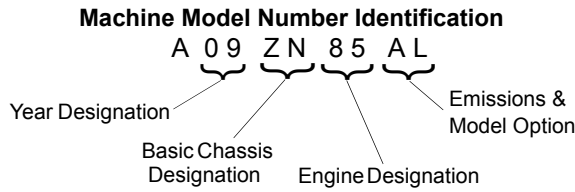


GENERAL INFORMATION

VEHICLE IDENTIFICATION

Model Identification

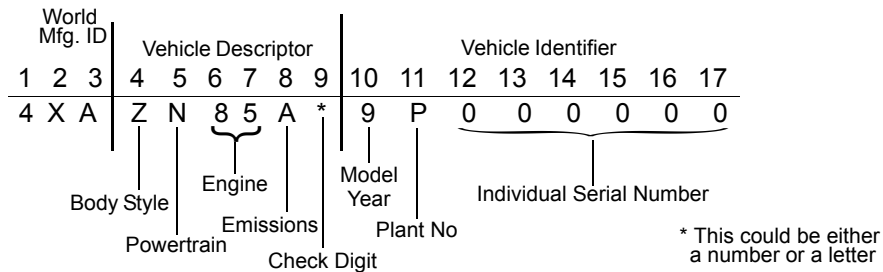
The machine model number must be used with any correspondence regarding warranty or service.



Engine Designation Number

EH085OLE.....Twin Cylinder, 4-Cycle SOHC, Liquid Cooled, Electric Start

Vehicle Identification Number (VIN)



Vehicle and Engine Serial Number Locations

Whenever corresponding about a Polaris ATV, be sure to refer to the vehicle identification number (VIN) and the engine serial number.

The VIN can be found stamped on the lower frame rail on the front LH side of the ATV (see Figure 1-1).

The engine serial number can be found on top of the engine located on the valve cover (see Figure 1-2).

